

<b>Date:</b>	June 13, 2022	<b>Owner/Client:</b>	New Gold Inc.
<b>Day:</b>	Monday	<b>Okane Project #:</b>	1003-027
<b>Prepared by:</b>	Blake Weinrauch	<b>Project Location:</b>	Ontario

Number of Pages in Report 4

**Environmental Conditions:**

<u>Morning Conditions</u>	Weather	Showers	Precipitation	0 - 5 mm
Temperature (High/Low)	19	16	Humidity	80 to 100%
			Wind	Low
<u>Afternoon Conditions</u>	Weather	Fair	Precipitation	0 mm
Temperature (High/Low)	26	19	Humidity	60 to 80%
			Wind	Low

**General Comments**

General:

- No cover system construction completed.
- Material stockpiled at crest of slope ahead where P31 and P32 will be constructed. Material appeared to be dark brown and plastic with pockets of lighter brown material. Minimal rock appeared to be present.

P30, L2:

- Intermittent showers kept P30 L2 moist.
- Minimal dry material still present underneath moist top layer.
- Cracking of L2 still present as a result of previous extreme drying.

P30, L3:

- Material moistening from rainfall.
- Pockets of standing water present

CQA Representative:

<original signed by>

Issue #	Description	Location	Resolution	Monitor	Status
1	South side of P30, L2 reaching concerning levels of surface desiccation prior to coverage	South half of P30, L2 toe	South half P30, L2 covered with as much dark brown, moist, and pliable NCL material as possible prior to end of day by dozer	Yes	Open
				Choose:	Choose:
				Choose:	Choose:
				Choose:	Choose:
				Choose:	Choose:

PHOTOGRAPHS



Photo #: 1

Minimal crusting on P30 L2



Photo #: 2

P30 L2 cracking present



Photo #: 3

Material stockpiled on crest of slope where P31 and P32 will be placed



Photo #: 4

Stockpiled material varying in colour

**PHOTOGRAPHS**



Photo #: 1

Dark brown plastic material (Bottom)  
Light brown non-plastic material (Top)

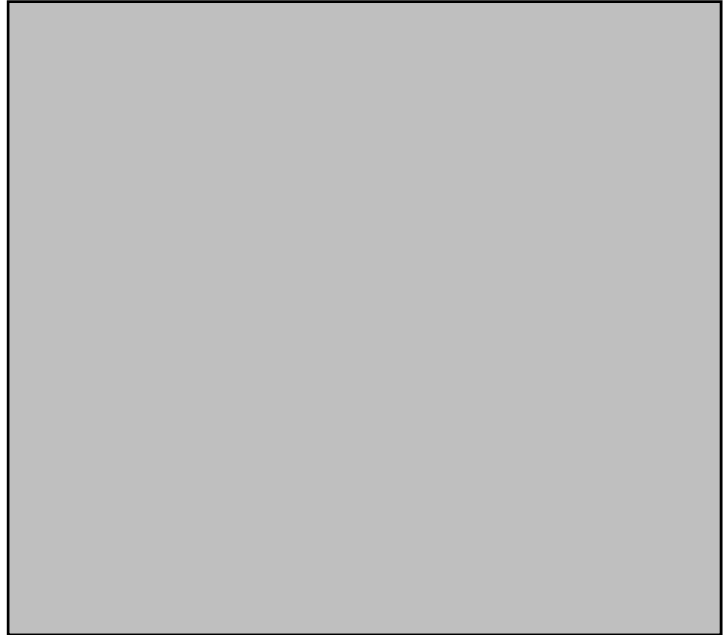


Photo #:

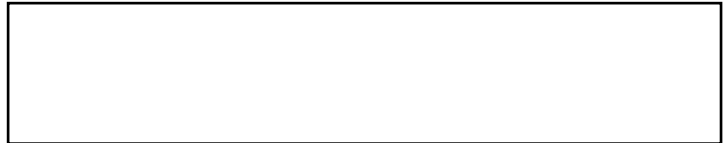


Photo #:



Photo #:



<b>Date:</b>	June 14, 2022	<b>Owner/Client:</b>	New Gold Inc.
<b>Day:</b>	Tuesday	<b>Okane Project #:</b>	1003-027
<b>Prepared by:</b>	Blake Weinrauch	<b>Project Location:</b>	Ontario

Number of Pages in Report 3

**Environmental Conditions:**

<u>Morning Conditions</u>	Weather	Rain	Precipitation	0 - 5 mm
Temperature (High/Low)	17	13	Humidity	80 to 100%
			Wind	Moderate
<u>Afternoon Conditions</u>	Weather	Showers	Precipitation	0 - 5 mm
Temperature (High/Low)	24	17	Humidity	80 to 100%
			Wind	Moderate

**General Comments**

General:

- No cover system construction completed.
- Okane and Tulloch both advised to demobilize EMRS staff from site until July 1, 2022

P30, L2:

- Continued rainfall moistening P30 L2

P30, L3:

- Material continued wetting from rainfall.
- Pockets of standing water present

CQA Representative:

<original signed by>

Issue #	Description	Location	Resolution	Monitor	Status
1	South side of P30, L2 reaching concerning levels of surface desiccation prior to coverage	South half of P30, L2 toe	South half P30, L2 covered with as much dark brown, moist, and pliable NCL material as possible prior to end of day by dozer	Yes	Open
				Choose:	Choose:
				Choose:	Choose:
				Choose:	Choose:
				Choose:	Choose:

<b>Date:</b>	June 30, 2022	<b>Owner/Client:</b>	New Gold Inc.
<b>Day:</b>	Thursday	<b>Okane Project #:</b>	1003-223
<b>Prepared by:</b>	Brady Hay	<b>Project Location:</b>	Ontario

Number of Pages in Report 3

**Environmental Conditions:**

<u>Morning Conditions</u>	Weather	Choose From List	Precipitation	Choose From List
Temperature (High/Low)	N/A	N/A	Humidity	Choose from List
			Wind	Choose from List
<u>Afternoon Conditions</u>	Weather	Clear	Precipitation	0 mm
Temperature (High/Low)	20	18	Humidity	40 to 60%
			Wind	Moderate

**General Comments**

General:

- Okane returned to site in preparation for cover construction resuming July 1st.
- CQA performed spot checks throughout P30 L2 & L3 to determine the depth of desiccation present since construction had paused.
- Met with Mitchell Hearn to discuss current conditions of P30 and re-work needed prior to continuing cover construction. Based on spot checks CQA recommended skimming the exposed areas of P30, L2 to where adequate material was found upon spot checks (0.45m from waste rock) and 1m into L3 for tie in.

P30, L2:

- Three spot checks completed on the exposed areas of L2. Brownish grey, moist, pliable material was reached at a depth of approximately 150mm in all three locations.

P30, L3:

- Spot check completed on south east quarter of P30 where material placement was visually the thinnest. Based on inspection it was determined desiccation had not reached the CCL material below as moist material was discovered below a thin layer of dry material.
- Okane recommends skimming the top surface of L3 prior to the completion of L3 to grade with new NCL material.

CQA Representative:

<original signed by>

Issue #	Description	Location	Resolution	Monitor	Status
1	South side of P30, L2 reaching concerning levels of surface desiccation prior to coverage	South half of P30, L2 toe	South half P30, L2 covered with as much dark brown, moist, and pliable NCL material as possible prior to end of day by dozer	Yes	Open
2	Desiccated material on P30, L2 & L3 following pause of cover construction	Exposed areas of P30, L2 & L3	P30 L2 to be trimmed to remove desiccated material, replaced with new CCL material, compacted, and tested for re-approval. Top surface	Yes	Open
				Choose:	Choose:
				Choose:	Choose:
				Choose:	Choose:

**PHOTOGRAPHS**



Photo #: 1

P30, L2 spot check #1 material



Photo #: 2

P30, L2 spot check #1 depth



Photo #: 3

P30, L2 spot check #2



Photo #: 4

P30, L2 spot check #3

**PHOTOGRAPHS**

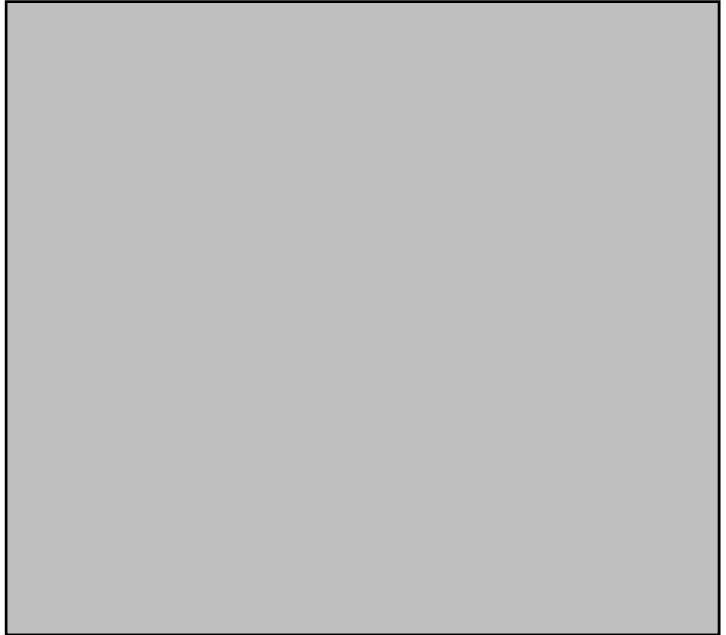
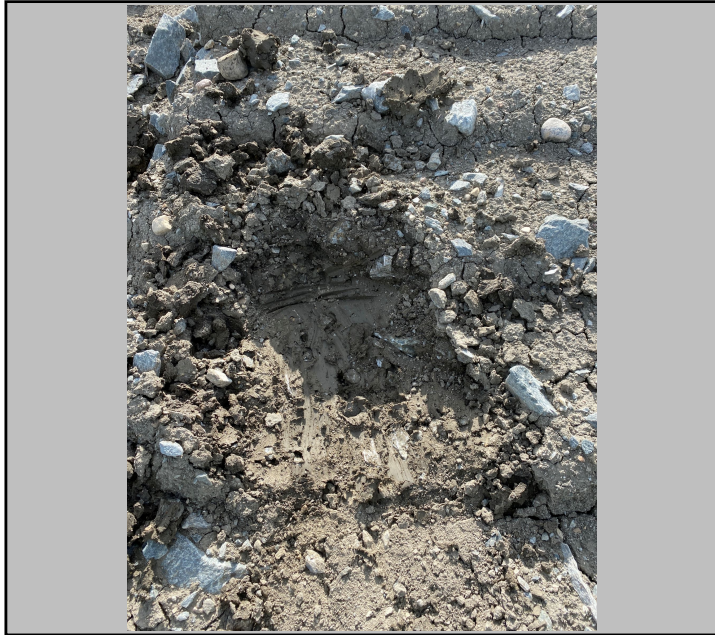


Photo #: 5

Photo #:

P30, L3 spot check



Photo #:

Photo #:

Duplicate Page

<b>Date:</b>	July 1, 2022	<b>Owner/Client:</b>	New Gold Inc.
<b>Day:</b>	Friday	<b>Okane Project #:</b>	1003-223
<b>Prepared by:</b>	Brady Hay	<b>Project Location:</b>	Ontario

Number of Pages in Report 4

**Environmental Conditions:**

<u>Morning Conditions</u>	Weather	Fair	Precipitation	0 mm
Temperature (High/Low)	20	9	Humidity	80 to 100%
			Wind	Low
<u>Afternoon Conditions</u>	Weather	Fair	Precipitation	0 mm
Temperature (High/Low)	22	20	Humidity	20 to 40%
			Wind	Moderate

**General Comments**

General:

- Met with Mitchell (New Gold) and Keith (Tulloch) to discuss re-work and tie in of P30, L2. New Gold comfortable using hydraulic conductivity for final approval and decided to skim the surface of L2 and mix material with the dozers opposed to cutting the lift to approximately 0.45m and bringing in new material to increase the depth back to 0.6m.

P30, L2:

- Dozers utilized to rework L2 by skimming a top layer of material and mixing/track packing the material below.
- Following rework of L2 CQA requested CQC complete a moisture check with the nuclear gauge prior to compaction to ensure the optimum moisture content of 20.6% was achieved. A moisture content of 21% was achieved and compaction was initiated with vibration to aid in bringing moisture to the surface.
- Small areas containing scattered dry spots among moist pliable material noted during compaction. CQA requested D488 be completed within the largest of these areas (approximately 6'x10') where a testing surface could be created. D488 yielded a 26.4% moisture content on the edge of the dry material. The dry spots noted appeared to have suitable material further below the surface and the area was flagged for borehole permeameter testing.
- Nuclear density testing yielded adequate results and the re-worked surface thickness was confirmed by CQC following survey. Hydraulic conductivity testing to be utilized for final approval.

P30, L3:

- CQA recommended utilizing moist material to place directly over top of L2 to aid in the re-hydration of any of any dry spots present in the reworked CCL.
- With areas of standing water still present in pockets of L3, operators mixed the wet spots with the previously placed L3 material for placement over L2.
- L3 placed at a reduced lift to promptly cover the reworked L2 before more NCL material began being hauled from the southern borrow source.

CQA Representative:

<original signed by>

Issue #	Description	Location	Resolution	Monitor	Status
1	South side of P30, L2 reaching concerning levels of surface desiccation prior to coverage	South half of P30, L2 toe	South half P30, L2 covered with as much dark brown, moist, and pliable NCL material as possible prior to end of day by dozer	No	Open
2	Desiccated material on P30, L2 & L3 following pause of cover construction	Exposed areas of P30, L2 & L3	L2 trimmed and material was mixed/ track packed before re-compaction, retesting, survey. L3 material mixed prior to placement	No	Open
				Choose:	Choose:
				Choose:	Choose:
				Choose:	Choose:

PHOTOGRAPHS



Photo #: 1

P30, L2 compaction following rework



Photo #: 2

South edge of reworked area prior to being extended 1m for tie in



Photo #: 3

South edge of reworked area extended 1m into L3



Photo #: 4

D488

PHOTOGRAPHS



Photo #: 5

D488 material



Photo #: 6

P30, L2 rework and testing complete



Photo #: 7

Pockets of water on P30, L3 prior to mixing material



Photo #: 8

P30, L3 placed to cover reworked L2 material

<b>Date:</b>	July 2, 2022	<b>Owner/Client:</b>	New Gold Inc.
<b>Day:</b>	Saturday	<b>Okane Project #:</b>	1003-223
<b>Prepared by:</b>	Brady Hay	<b>Project Location:</b>	Ontario

Number of Pages in Report 3

**Environmental Conditions:**

<u>Morning Conditions</u>	Weather	Fair	Precipitation	0 mm
Temperature (High/Low)	18	9	Humidity	80 to 100%
			Wind	Moderate
<u>Afternoon Conditions</u>	Weather	Fair	Precipitation	0 mm
Temperature (High/Low)	21	18	Humidity	40 to 60%
			Wind	Low

**General Comments**

General:  
 - Met with CQC to discuss minimum NCL testing frequencies prior to start of P30, L4 placement.

P30, L3:  
 - Suitable NCL material continued to be hauled from the southern borrow source while L3 was brought to grade by the dozer.  
 - L3 surveyed by CQC and proper lift thickness confirmed.

P30, L4:  
 - L4 placement initiated near end of day with suitable NCL material continuing to be hauled from the southern borrow source.  
 - L4 in progress.

CQA Representative:

<original signed by>

Issue #	Description	Location	Resolution	Monitor	Status
1	South side of P30, L2 reaching concerning levels of surface desiccation prior to coverage	South half of P30, L2 toe	South half P30, L2 covered with as much dark brown, moist, and pliable NCL material as possible prior to end of day by dozer	No	Open
2	Desiccated material on P30, L2 & L3 following pause of cover construction	Exposed areas of P30, L2 & L3	L2 trimmed and material was mixed/ track packed before re-compaction, retesting, and survey. L3 material mixed prior to placement.	No	Open
				Choose:	Choose:
				Choose:	Choose:
				Choose:	Choose:

**PHOTOGRAPHS**



Photo #: 1

Southern borrow area for NCL use



Photo #: 2

P30, L3 placement in progress



Photo #: 3

P30, L3 placed to grade



Photo #: 4

P30, L4 placement initiated near end of day

<b>Date:</b>	July 3, 2022	<b>Owner/Client:</b>	New Gold Inc.
<b>Day:</b>	Sunday	<b>Okane Project #:</b>	1003-223
<b>Prepared by:</b>	Brady Hay	<b>Project Location:</b>	Ontario

Number of Pages in Report 4

**Environmental Conditions:**

<u>Morning Conditions</u>	Weather	Cloudy	Precipitation	0 - 5 mm
Temperature (High/Low)	19	10	Humidity	80 to 100%
			Wind	Low
<u>Afternoon Conditions</u>	Weather	Fair	Precipitation	0 mm
Temperature (High/Low)	21	19	Humidity	40 to 60%
			Wind	Low

**General Comments**

General:

- Spoke with CQC to discuss haul trucks backing onto bench/crown of P30, L3 and over compacting previously placed NCL material. Subsequent loads were dumped further back.
- Spoke with Mitchell Hearn regarding the quality of the NCL material from the southern borrow source. Operators were able to find areas of material with lowered rock content while loading trucks for NCL use which appear suitable for CCL use if operators are selective during the loading process. CQA to meet with CQC to determine if any previous stockpile samples from the southern stockpile are still applicable or if a new sample should be taken preemptively.

P30, L4:

- L4 placement continued with suitable NCL material from the southern borrow source.
- L4 in progress.

CQA Representative:

<original signed by>

Issue #	Description	Location	Resolution	Monitor	Status
1	South side of P30, L2 reaching concerning levels of surface desiccation prior to coverage	South half of P30, L2 toe	South half P30, L2 covered with as much dark brown, moist, and pliable NCL material as possible prior to end of day by dozer	No	Open
2	Desiccated material on P30, L2 & L3 following pause of cover construction	Exposed areas of P30, L2 & L3	L2 trimmed and material was mixed/ track packed before re-compaction, retesting, and survey. L3 material mixed prior to placement.	No	Open
				Choose:	Choose:
				Choose:	Choose:
				Choose:	Choose:

**PHOTOGRAPHS**



Photo #: 1

P30, L4 placement in progress



Photo #: 2

P30, L4 material hauled from southern borrow area



Photo #: 3

Area within southern stockpile with reduced rock content



Photo #: 4

Area within southern borrow area with large volume of stone

**PHOTOGRAPHS**



Photo #: 5

Area within southern stockpile with reduced rock content



Photo #: 6

Area within southern borrow area with large volume of stone



Photo #: 7

P30, L4 at end of day



Photo #:

<b>Date:</b>	July 4, 2022	<b>Owner/Client:</b>	New Gold Inc.
<b>Day:</b>	Monday	<b>Okane Project #:</b>	1003-223
<b>Prepared by:</b>	Brady Hay	<b>Project Location:</b>	Ontario

Number of Pages in Report 3

**Environmental Conditions:**

<u>Morning Conditions</u>		Weather	Showers	Precipitation	0 - 5 mm	
Temperature (High/Low)	19	16	Humidity	80 to 100%	Wind	Low
<u>Afternoon Conditions</u>		Weather	Showers	Precipitation	0 - 5 mm	
Temperature (High/Low)	20	19	Humidity	80 to 100%	Wind	Low

**General Comments**

General:

- Met with Mitchell (New Gold) and Keith (Tulloch) to view areas of the southern borrow source for potential use in CCL lifts. An area on the east edge of the stockpile (near P28) visually contained a smaller quantity of stone and appeared adequate for CCL use. The excavator was used to dig into the pile so stockpile sample 544 could be obtained. Upon sampling the material appeared grey, moist, and pliable. The material in the southern stockpile outside of the area for potential CCL use visually contains a high quantity of stone. Okane recommends still utilizing this material for NCL use only.

P30, L4:

- L4 placement continued with suitable NCL material from the southern borrow source.
- L4 in progress.

CQA Representative:

<original signed by>

Issue #	Description	Location	Resolution	Monitor	Status
1	South side of P30, L2 reaching concerning levels of surface desiccation prior to coverage	South half of P30, L2 toe	South half P30, L2 covered with as much dark brown, moist, and pliable NCL material as possible prior to end of day by dozer	No	Open
2	Desiccated material on P30, L2 & L3 following pause of cover construction	Exposed areas of P30, L2 & L3	L2 trimmed and material was mixed/ track packed before re-compaction, retesting, and survey. L3 material mixed prior to placement.	No	Open
				Choose:	Choose:
				Choose:	Choose:
				Choose:	Choose:

PHOTOGRAPHS



Photo #: 1

P30, L4 in progress



Photo #: 2

Eastern edge of southern borrow source for potential CCL use



Photo #: 3

S544 sampling location



Photo #: 4

S544 material

<b>Date:</b>	July 5, 2022	<b>Owner/Client:</b>	New Gold Inc.
<b>Day:</b>	Tuesday	<b>Okane Project #:</b>	1003-223
<b>Prepared by:</b>	Brady Hay	<b>Project Location:</b>	Ontario

Number of Pages in Report 4

**Environmental Conditions:**

<u>Morning Conditions</u>	Weather	Fair	Precipitation	0 mm
Temperature (High/Low)	22	18	Humidity	80 to 100%
			Wind	Low
<u>Afternoon Conditions</u>	Weather	Fair	Precipitation	0 mm
Temperature (High/Low)	24	22	Humidity	40 to 60%
			Wind	Low

**General Comments**

General:

- Previous evening rain resulted in wet conditions and areas of standing water on the recently placed P30, L4 material. As a result P31 placement was initiated while P30, L4 was given time to dry.
- Met with CQC to discuss tie in to P30 during P31, L1 placement. CQA recommended cutting back the south edge of P30 during the placement of P31, L1 in order to achieve adequate overlap between panels and avoid gaps in placement maps.

P31 Key Trench:

- Key trench dug to varying depths throughout the width of the panel with bedrock being reached consistently throughout. The depth of excavation became shallower while the trench progressed south as the elevation of the bedrock increased.
- Key trench excavation resulted in waste rock from the slope being piled outside the cover system due to the slope butting up to a topsoil berm. Following excavation the waste rock was removed by the excavator.

P31, L1:

- L1 placed with material previously stockpiled on the bench. After mixing the stockpiled material it appeared brownish grey, moist and pliable with dry areas noted on the top quarter of the panel. CQC marked the dry areas and the excavator was utilized to remove the dry material and replace the excavation with moist material from the stockpile.
- Following placement to grade operators were able to remove over sized stone with the excavator and fill in a low spot prior to compaction. Four passes with the roller was utilized on L1.
- Nuclear density testing yielded adequate results, and proper thickness was confirmed by CQC.

P30, L4:

- L4 left to dry throughout the day.
- Lift still in progress.

CQA Representative:

<original signed by>

Issue #	Description	Location	Resolution	Monitor	Status
1	South side of P30, L2 reaching concerning levels of surface desiccation prior to coverage	South half of P30, L2 toe	South half P30, L2 covered with as much dark brown, moist, and pliable NCL material as possible prior to end of day by dozer	No	Open
2	Desiccated material on P30, L2 & L3 following pause of cover construction	Exposed areas of P30, L2 & L3	L2 trimmed and material was mixed/ track packed before re-compaction, retesting, and survey. L3 material mixed prior to placement.	No	Open
				Choose:	Choose:
				Choose:	Choose:
				Choose:	Choose:

**PHOTOGRAPHS**



Photo #: 1

P31, L1 tie in with P30



Photo #: 2

P31 key trench dug to varying depths with bedrock reached throughout



Photo #: 3

Shallow excavation at south end of key trench completed to bedrock



Photo #: 4

Excavator pulling back the bench/crown of P30 to ensure adequate overlap with P31, L1

PHOTOGRAPHS



Photo #: 5

Excavator replacing dry patches with moist material following over size stone removal



Photo #: 6

P31, L1 compaction



Photo #: 7

D488 material



Photo #: 8

P31, L1 completed and tested

Duplicate Page

<b>Date:</b>	July 6, 2022	<b>Owner/Client:</b>	New Gold Inc.
<b>Day:</b>	Wednesday	<b>Okane Project #:</b>	1003-223
<b>Prepared by:</b>	Brady Hay	<b>Project Location:</b>	Ontario

Number of Pages in Report 4

**Environmental Conditions:**

<u>Morning Conditions</u>		Weather	Fair	Precipitation	0 mm
Temperature (High/Low)	23   16	Humidity	60 to 80%	Wind	Low
<u>Afternoon Conditions</u>		Weather	Fair	Precipitation	0 mm
Temperature (High/Low)	24   23	Humidity	40 to 60%	Wind	Moderate

**General Comments**

General:

- Spoke with CQC to discuss material loads from the southern borrow area. With material appearing to be more of a brenna mixture it varied visually from the material from the bench stockpile. While brenna material is acceptable for CCL use, the mixing of two visually different material sources could create difficulty obtaining consistent results throughout the lift.
- Spoke with CQC to discuss the appropriate proctor value for nuclear density testing of P31, L2 prior to lift completion. With material being sourced from different locations CQA recommended beginning with S538 as it was taken in the area where the majority of the P31, L2 material was sourced from (south half of material stockpiled on the bench).
- Excavator used to smooth areas of the waste rock surface south of P31 prior to Tulloch survey.

P31, L2:

- L2 completed with material from the stockpile on the bench as well as material from the previously mentioned potential CCL area of the southern borrow source. Despite S544 yielding favourable results, the loads of material from the southern borrow area appeared brown with patches of silty material. Instead of continuing to haul material until the centre of the stockpile could be reached the decision was made to complete the lift with the remaining material from the bench stockpile that was initially used to aid in creating a homogeneous lift.
- Upon completion L2 material appeared brownish grey, moist, and pliable with little stone content. Four passes with the roller was completed for L2.
- Nuclear density testing yielded similar results to L1, with moisture contents exceeding +4% of optimum according to the most representative proctor in some areas. Upon in-situ analysis by CQA the material did not appear wet and was able to be adequately rolled and ribboned. Proper thickness confirmed by CQC.

P30, L4:

- Lift still in progress.

CQA Representative:

<original signed by>

Issue #	Description	Location	Resolution	Monitor	Status
1	South side of P30, L2 reaching concerning levels of surface desiccation prior to coverage	South half of P30, L2 toe	South half P30, L2 covered with as much dark brown, moist, and pliable NCL material as possible prior to end of day by dozer	No	Open
2	Desiccated material on P30, L2 & L3 following pause of cover construction	Exposed areas of P30, L2 & L3	L2 trimmed and material was mixed/ track packed before re-compaction, retesting, and survey. L3 material mixed prior to placement.	No	Open
				Choose:	Choose:
				Choose:	Choose:
				Choose:	Choose:

PHOTOGRAPHS



Photo #: 1

P31, L2 initiated with material stockpiled on the bench



Photo #: 2

material from stockpile on the bench



Photo #: 3

Material from from southern borrow area



Photo #: 4

Waste rock surface smoothed by excavator prior to Tulloch survey

Duplicate Page

PHOTOGRAPHS



Photo #: 5

P31, L2 compaction in progress



Photo #: 6

D497 material



Photo #: 7

P31, L2 completed and tested



Photo #:

<b>Date:</b>	July 7, 2022	<b>Owner/Client:</b>	New Gold Inc.
<b>Day:</b>	Thursday	<b>Okane Project #:</b>	1003-223
<b>Prepared by:</b>	Brady Hay	<b>Project Location:</b>	Ontario

Number of Pages in Report 3

**Environmental Conditions:**

<u>Morning Conditions</u>	Weather	Cloudy	Precipitation	0 mm
Temperature (High/Low)	20	17	Humidity	80 to 100%
			Wind	Low
<u>Afternoon Conditions</u>	Weather	Fair	Precipitation	0 mm
Temperature (High/Low)	24	20	Humidity	40 to 60%
			Wind	Moderate

**General Comments**

General:

- Downloads for cover trial monitoring stations P1 & P2 and a voltage check of P2 completed.
- Material from the southern borrow source began to be stockpiled on the bench of P30 intermittently in preparation of resuming L4 placement.

P31, L3:

- L3 placed at a reduced depth to cover the entirety of L2 prior to being raised to grade.
- L3 completed with suitable NCL material hauled from the southern borrow source.

P30, L4:

- L4 placement resumed near end of day with suitable NCL material from the southern borrow area following the completion of P31, L3.
- Lift still in progress.

CQA Representative:

<original signed by>

Issue #	Description	Location	Resolution	Monitor	Status
1	South side of P30, L2 reaching concerning levels of surface desiccation prior to coverage	South half of P30, L2 toe	South half P30, L2 covered with as much dark brown, moist, and pliable NCL material as possible prior to end of day by dozer	No	Open
2	Desiccated material on P30, L2 & L3 following pause of cover construction	Exposed areas of P30, L2 & L3	L2 trimmed and material was mixed/ track packed before re-compaction, retesting, and survey. L3 material mixed prior to placement.	No	Open
				Choose:	Choose:
				Choose:	Choose:
				Choose:	Choose:

**PHOTOGRAPHS**



Photo #: 1

P31, L3 placement in progress



Photo #: 2

NCL material stockpiled on P30 bench  
intermittently



Photo #: 3

P31, L3 placed to grade

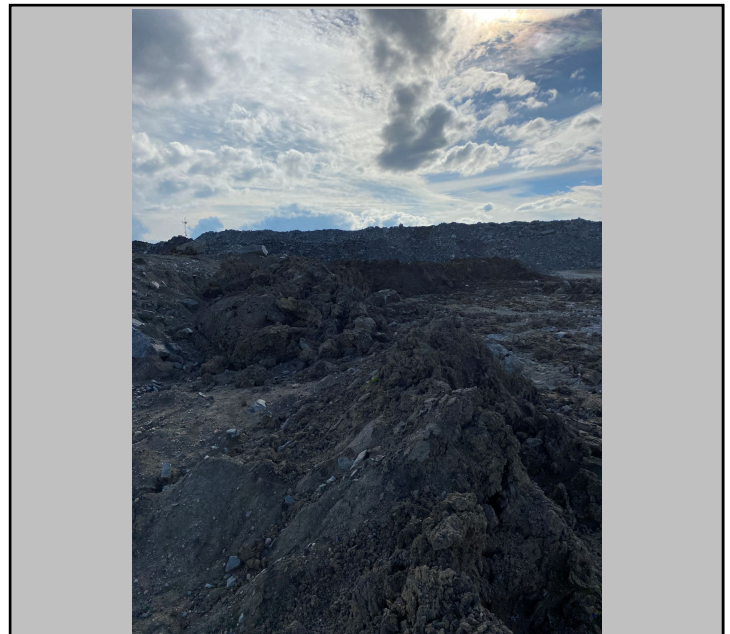


Photo #: 4

Progress into southern borrow source

<b>Date:</b>	July 8, 2022	<b>Owner/Client:</b>	New Gold Inc.
<b>Day:</b>	Friday	<b>Okane Project #:</b>	1003-223
<b>Prepared by:</b>	Brady Hay	<b>Project Location:</b>	Ontario

Number of Pages in Report 3

**Environmental Conditions:**

<u>Morning Conditions</u>		Weather	Fair	Precipitation	0 mm
Temperature (High/Low)	24   16	Humidity	80 to 100%	Wind	Low
<u>Afternoon Conditions</u>		Weather	Clear	Precipitation	0 mm
Temperature (High/Low)	26   24	Humidity	20 to 40%	Wind	Low

**General Comments**

General:

- Download for waste rock monitoring station T1\_SS2 completed and new program uploaded.
- Met with New Gold and Tulloch on the EMRS to discuss the possibility of reducing the bench size in the current work area from 20m to 10m. Okane had no issue with the proposal as 10m is a large enough bench size to allow for adequate tie in with subsequent lifts. Following internal discussions with mine-ops New Gold decided to continue with the current bench size.
- Spoke with Mitchell Hearn regarding large pieces of waste rock located at the toe of the slopes south of P31 as they will likely pose an issue during key trenching moving forward.

P31, L3:

- L3 surveyed and proper thickness confirmed by CQC.

P30, L4:

- L4 placement continued with suitable NCL material from the southern borrow source.
- Lift still in progress.

CQA Representative:

<original signed by>

Issue #	Description	Location	Resolution	Monitor	Status
1	South side of P30, L2 reaching concerning levels of surface desiccation prior to coverage	South half of P30, L2 toe	South half P30, L2 covered with as much dark brown, moist, and pliable NCL material as possible prior to end of day by dozer	No	Open
2	Desiccated material on P30, L2 & L3 following pause of cover construction	Exposed areas of P30, L2 & L3	L2 trimmed and material was mixed/ track packed before re-compaction, retesting, and survey. L3 material mixed prior to placement.	No	Open
				Choose:	Choose:
				Choose:	Choose:
				Choose:	Choose:

**PHOTOGRAPHS**



Photo #: 1

P30, L4 in progress



Photo #: 2

Waste rock piled at toe of slope



Photo #: 3

P30, L4 at end of day



Photo #: 4

Progression into southern borrow source at end of day

<b>Date:</b>	July 9, 2022	<b>Owner/Client:</b>	New Gold Inc.
<b>Day:</b>	Saturday	<b>Okane Project #:</b>	1003-223
<b>Prepared by:</b>	Brady Hay	<b>Project Location:</b>	Ontario

Number of Pages in Report 3

**Environmental Conditions:**

<u>Morning Conditions</u>		Weather	Fair	Precipitation	0 mm	
Temperature (High/Low)	24	14	Humidity	80 to 100%	Wind	Low
<u>Afternoon Conditions</u>		Weather	Fair	Precipitation	0 mm	
Temperature (High/Low)	27	24	Humidity	40 to 60%	Wind	Low

**General Comments**

General:

- Met with CQC to discuss P30, L4 following completion to grade. CQA noted areas of raised material at the toe to be flattened and excess coverage required on the north end of P30 to protect CCL material while construction progresses south.
- Elevation of topsoil berm greater than that of L4 in areas resulting in potential difficulty achieving drainage off the cover system. Once the raised material at P30 toe is flattened, P30 is to be monitored to evaluate runoff.

P31, L4:

- Material from southern borrow area stockpiled on the bench during P30, L4 placement.
- Placement of L4 started with stockpiled material near end of day.

P30, L4:

- L4 placed to grade with suitable NCL material from the southern borrow source. Excess stockpiled material was pushed further past the bench.
- Dozer utilized to slope material on the north edge of P30 to provide coverage for CCL material up to the burrito. Excess material where the dozer stopped still requires blending in.
- Raised material at the toe of P30 still present.

CQA Representative:

<original signed by>

Issue #	Description	Location	Resolution	Monitor	Status
1	South side of P30, L2 reaching concerning levels of surface desiccation prior to coverage	South half of P30, L2 toe	South half P30, L2 covered with as much dark brown, moist, and pliable NCL material as possible prior to end of day by dozer	No	Open
2	Desiccated material on P30, L2 & L3 following pause of cover construction	Exposed areas of P30, L2 & L3	L2 trimmed and material was mixed/ track packed before re-compaction, retesting, and survey. L3 material mixed prior to placement.	No	Open
3	Elevation of topsoil berm greater then L4 in areas (Berm height increases progressing south)	0+793 - 0+562	P30 toe to be monitored to evaluate if adequate runoff is achieved or if pooling occurs at the toe	Yes	Open
				Choose:	Choose:
				Choose:	Choose:

**PHOTOGRAPHS**



Photo #: 1

Haul truck stockpiling material for P31, L4



Photo #: 2

P31, L4 placement initiated near end of day



Photo #: 3

North end of P30 prior to coverage



Photo #: 4

North end of P30 following coverage

**PHOTOGRAPHS**



Photo #: 5

Raised material noted at P30 toe



Photo #: 6

Progression into southern borrow area



Photo #: 7

Material removed up to edge of P28 fro NCL use



Photo #:

<b>Date:</b>	July 10, 2022	<b>Owner/Client:</b>	New Gold Inc.
<b>Day:</b>	Sunday	<b>Okane Project #:</b>	1003-223
<b>Prepared by:</b>	Brady Hay	<b>Project Location:</b>	Ontario

Number of Pages in Report 5

**Environmental Conditions:**

<u>Morning Conditions</u>		Weather	Rain	Precipitation	0 - 5 mm
Temperature (High/Low)	24   22	Humidity	80 to 100%	Wind	High
<u>Afternoon Conditions</u>		Weather	Showers	Precipitation	0 - 5 mm
Temperature (High/Low)	26   24	Humidity	60 to 80%	Wind	Moderate

**General Comments**

General:

- Met with CQC to discuss the specifics of the work required at the toe of P30.
- Spoke with Mitchell Hearn to discuss the increased elevation of the topsoil berm progressing south.
- Excavator and wiggler utilized to remove piled waste rock from the toe between P31 and P29 while material was given time to dry.
- Rain occurring at end of day once P31, L4 placement had ceased. Conditions to be reassessed tomorrow with further rain in the forecast.

P31, L4:

- Material from southern borrow area stockpiled on the bench of P30.
- L4 placement resumed towards end of day after material was given time to dry following morning rain.

P30, L4:

- Dozer blended in areas of raised material at the toe prior to stand down due to lighting proximity and rain at 11:00.
- Once able to resume the excavator was utilized to blend in an area off excess material at the burrito into L4.
- L4 surveyed by CQC and proper thickness confirmed.

CQA Representative:

<original signed by>

Issue #	Description	Location	Resolution	Monitor	Status
1	South side of P30, L2 reaching concerning levels of surface desiccation prior to coverage	South half of P30, L2 toe	South half P30, L2 covered with as much dark brown, moist, and pliable NCL material as possible prior to end of day by dozer	No	Open
2	Desiccated material on P30, L2 & L3 following pause of cover construction	Exposed areas of P30, L2 & L3	L2 trimmed and material was mixed/ track packed before re-compaction, retesting, and survey. L3 material mixed prior to placement.	No	Open
3	Elevation of topsoil berm greater then L4 in areas (Berm height increases progressing south)	0+793 - 0+562	P30 toe to be monitored to evaluate if adequate runoff is achieved or if pooling occurs at the toe	Yes	Open
				Choose:	Choose:
				Choose:	Choose:

PHOTOGRAPHS



Photo #: 1

Haul truck stockpiling material from P31, L4



Photo #: 2

Raised material at toe flattened and blended in by dozer



Photo #: 3

Standing water at P31 toe following rain



Photo #: 4

Excavator removing piled waste rock from toe south of P31

PHOTOGRAPHS



Photo #: 5

Waste rock removed prior to further key trenching



Photo #: 6

Excess material near burrito blended in with excavator



Photo #: 7

P31, L3 after being given time to dry prior to placement

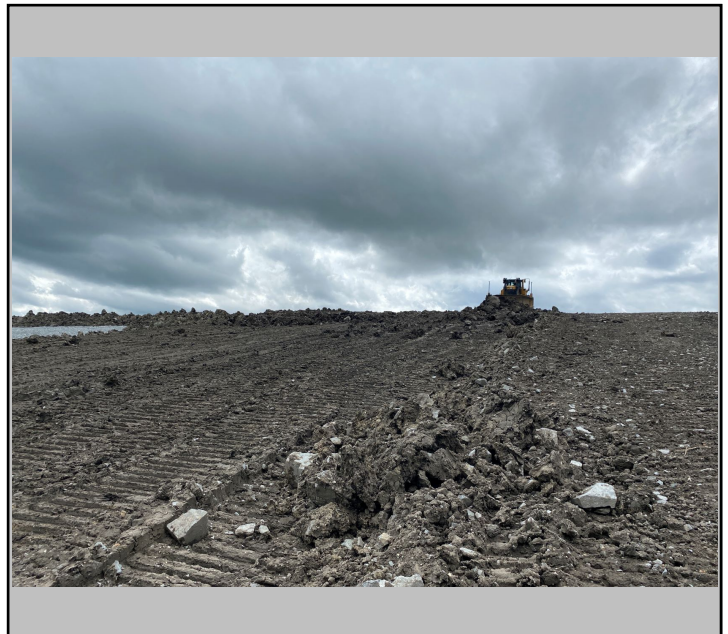


Photo #: 8

P31, L4 placement

Duplicate Page

**PHOTOGRAPHS**



Photo #: 9

P30, L4

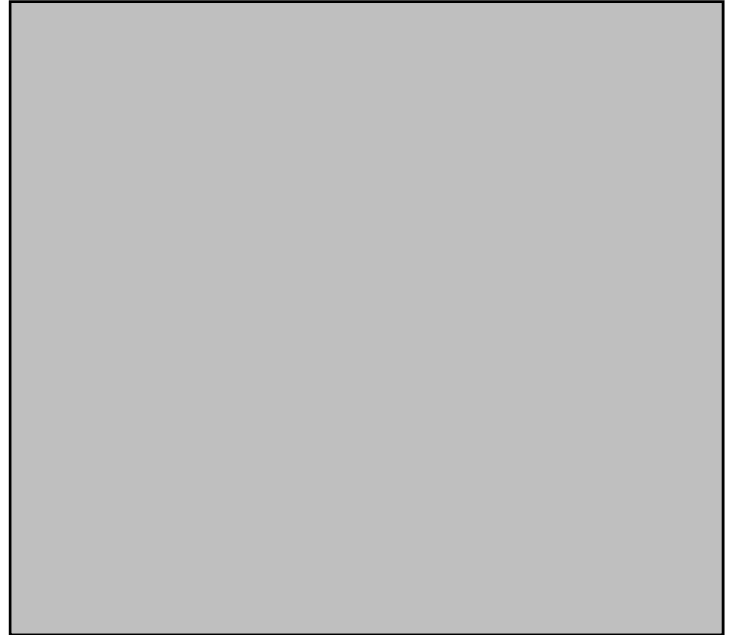


Photo #:



Photo #:



Photo #:

<b>Date:</b>	July 11, 2022	<b>Owner/Client:</b>	New Gold Inc.
<b>Day:</b>	Monday	<b>Okane Project #:</b>	1003-223
<b>Prepared by:</b>	Brady Hay	<b>Project Location:</b>	Ontario

Number of Pages in Report 3

**Environmental Conditions:**

<u>Morning Conditions</u>		Weather	Rain	Precipitation	0 - 5 mm
Temperature (High/Low)	18   16	Humidity	80 to 100%	Wind	Low
<u>Afternoon Conditions</u>		Weather	Showers	Precipitation	0 - 5 mm
Temperature (High/Low)	19   18	Humidity	80 to 100%	Wind	Moderate

**General Comments**

General:

- Wet conditions left material unworkable resulting in no cover construction being completed on the EMRS.
- P31 to be evaluated tomorrow morning.

P31, L3:

- Standing water present in track marks throughout the exposed areas of L3 with large puddles present at the toe.

P31, L4:

- Standing water present in track marks of previously placed L4.

CQA Representative:

<original signed by>

Issue #	Description	Location	Resolution	Monitor	Status
1	South side of P30, L2 reaching concerning levels of surface desiccation prior to coverage	South half of P30, L2 toe	South half P30, L2 covered with as much dark brown, moist, and pliable NCL material as possible prior to end of day by dozer	No	Open
2	Desiccated material on P30, L2 & L3 following pause of cover construction	Exposed areas of P30, L2 & L3	L2 trimmed and material was mixed/ track packed before re-compaction, retesting, and survey. L3 material mixed prior to placement.	No	Open
3	Elevation of topsoil berm greater than L4 in areas (Berm height increases progressing south)	0+793 - 0+562	Panels in the area to be monitored to evaluate if adequate runoff is achieved or if pooling occurs at the toe	Yes	Open
				Choose:	Choose:
				Choose:	Choose:

**PHOTOGRAPHS**



Photo #: 1

P31, L4 at end of day



Photo #: 2

P31, L3 at end of day



Photo #: 3

P30 toe



Photo #: