

Harry Papah

The Ring of Fire Regional Assessment Thunder Bay meeting, 23 April 26

Next steps for cumulative effects and scenarios

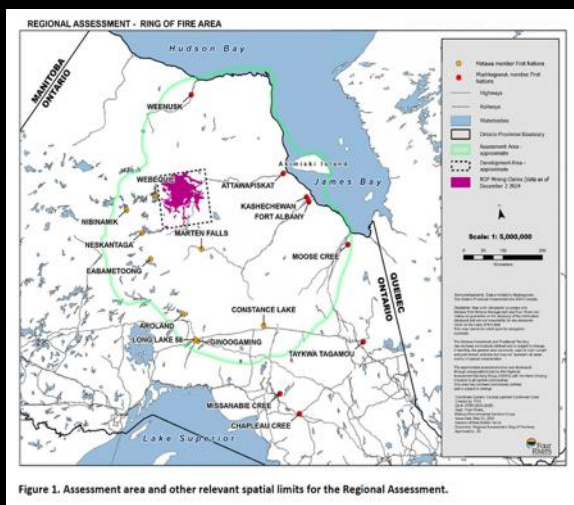


Figure 1. Assessment area and other relevant spatial limits for the Regional Assessment.

Interim Report

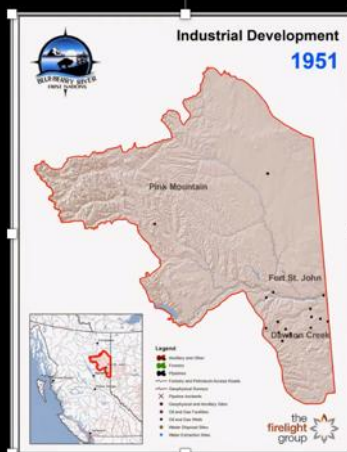
Bob Gibson
School of Environment, Resources and Sustainability,
University of Waterloo
rbgibson@uwaterloo.ca

Cumulative effects and Indigenous rights: looking back

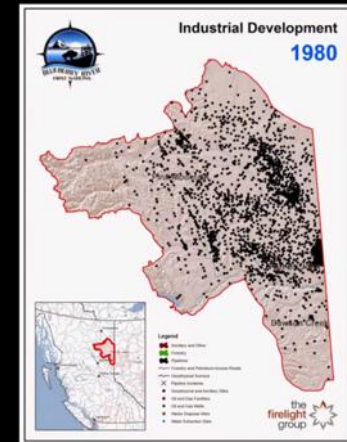
Cumulative effects on Blueberry River First Nations' lands in British Columbia, 1900-2015



Pre-development



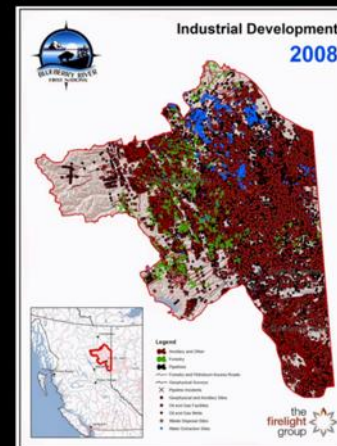
1951



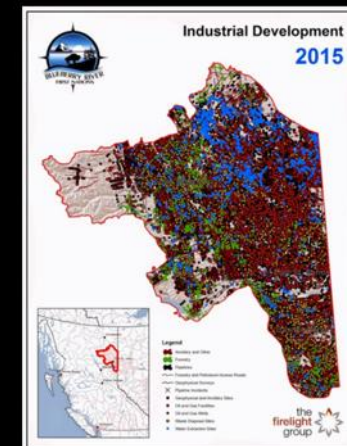
1980



2000



2008

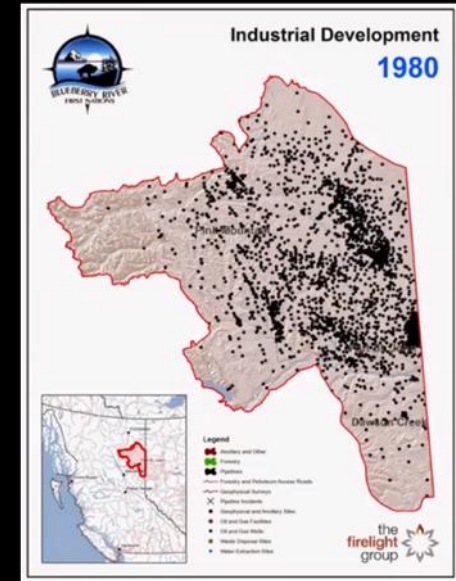


2015

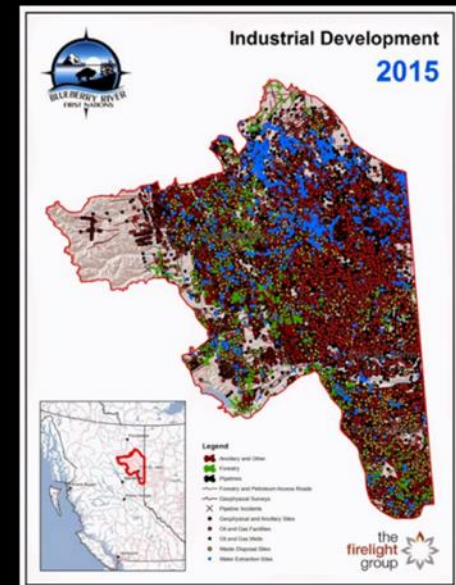
Looking back/looking ahead

Questions for the RoF RA in light of the Blueberry River case

- Could the RoF region look like BRFN region in 60 years or 150 years?
- What would be the consequences for Indigenous rights here?
- What would need to be done now to
 - protect the lands/waters and rights
 - establish Indigenous governance powers and co-management of the lands/waters from the outset, rather than after the land/waters are degraded



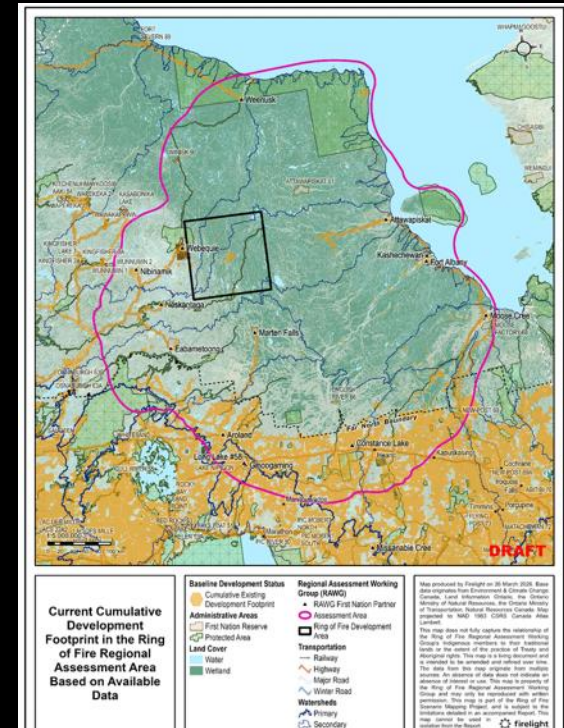
1980



2015

Looking ahead – big practical questions for cumulative effects and rights

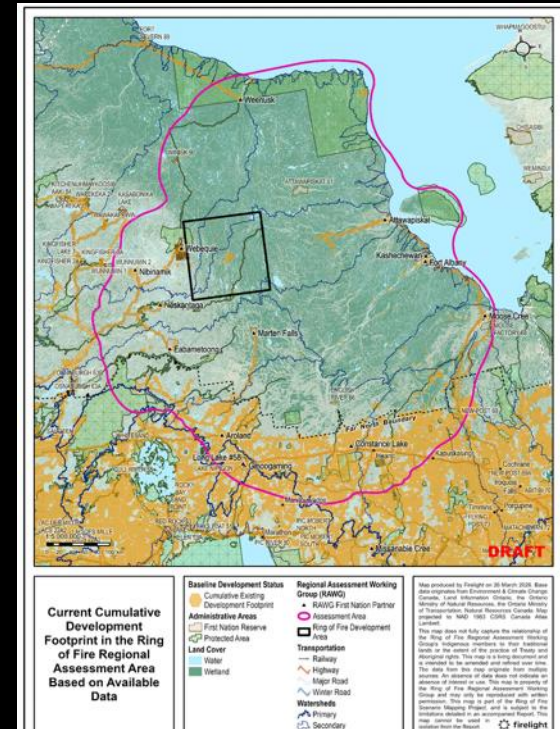
- What are the key cumulative effects that need to be anticipated and presented (on maps and stories, etc.) to show what must be prevented/managed?
- Would the results show that any development must be managed (e.g., to control the pace and scale of development)?



Firelight draft baseline map

What's missing from the baseline map?

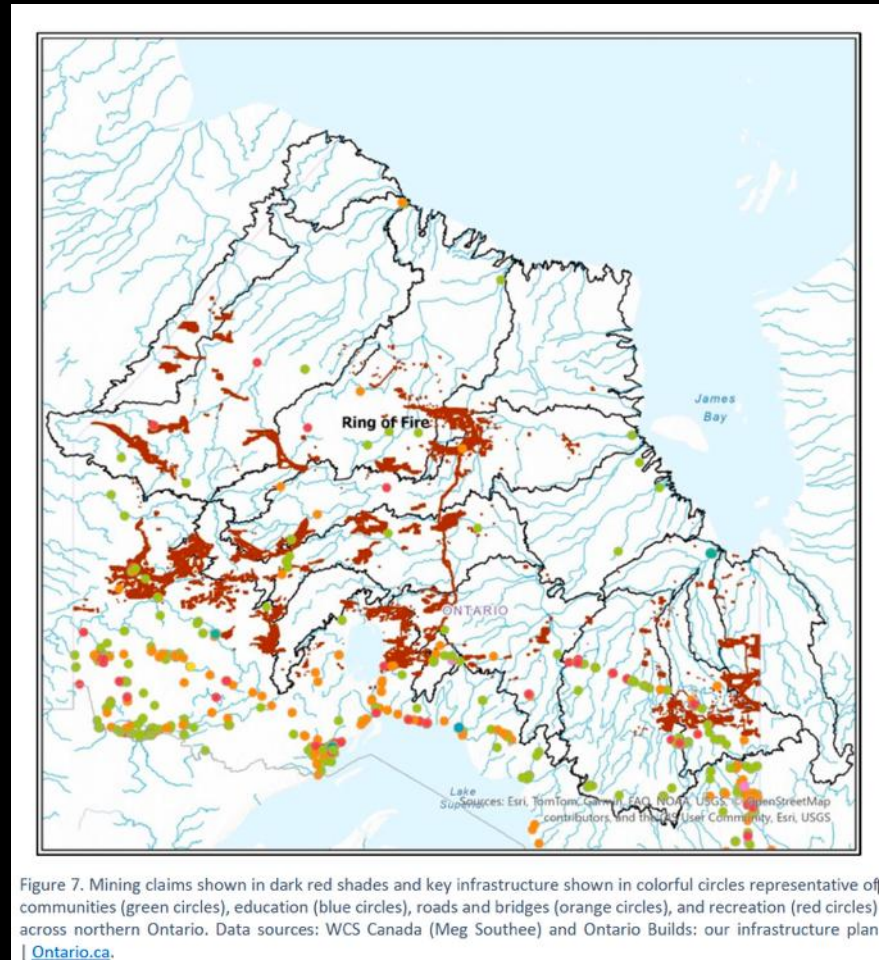
- past/continuing exploration and disturbance effects
- climate change effects so far
- FN traditional/current land use and specially valued areas
- areas recognized for needing especially strong protection
- community conditions and relations between community wellbeing and wellbeing of the lands/waters (e.g., country food)



Firelight draft baseline map

adding more for near term

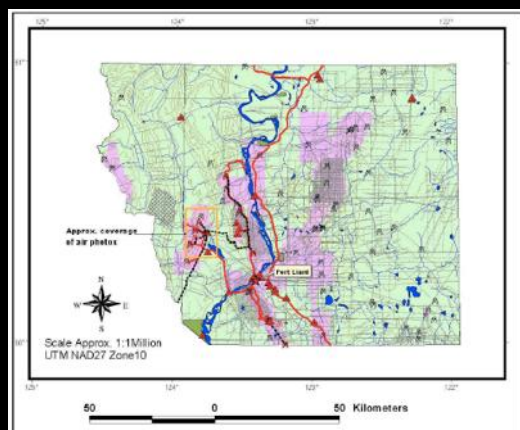
- a regional near term map with the community access roads and mining claims translated to
- possible numbers of mines,
- associated and induced development,
- past and additional disturbance effects



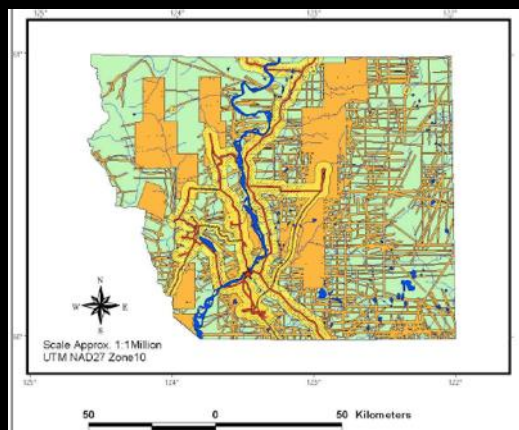
Disturbance effects

Anticipated cumulative effects of hydro-carbon development, Fort Liard region, NWT

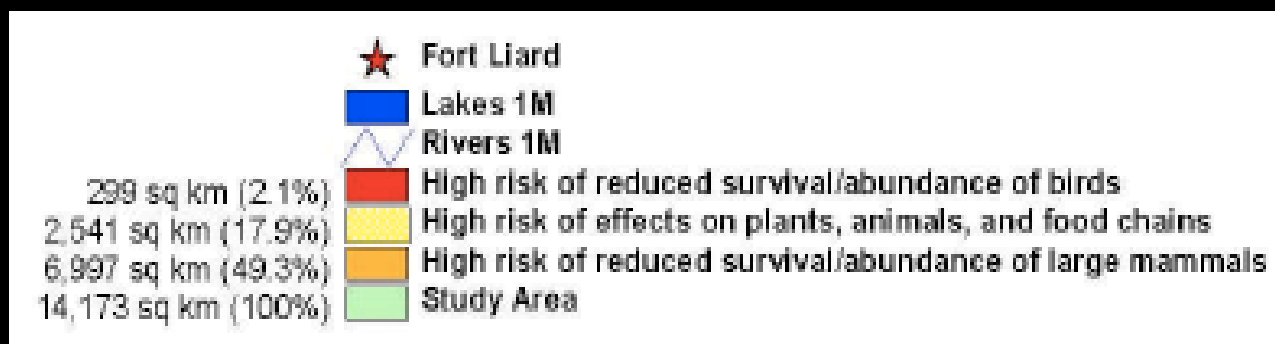
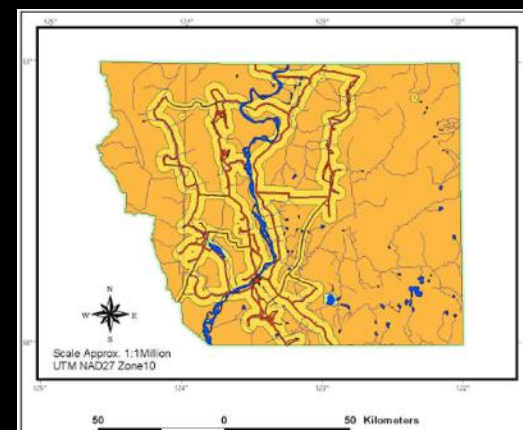
2001



2010



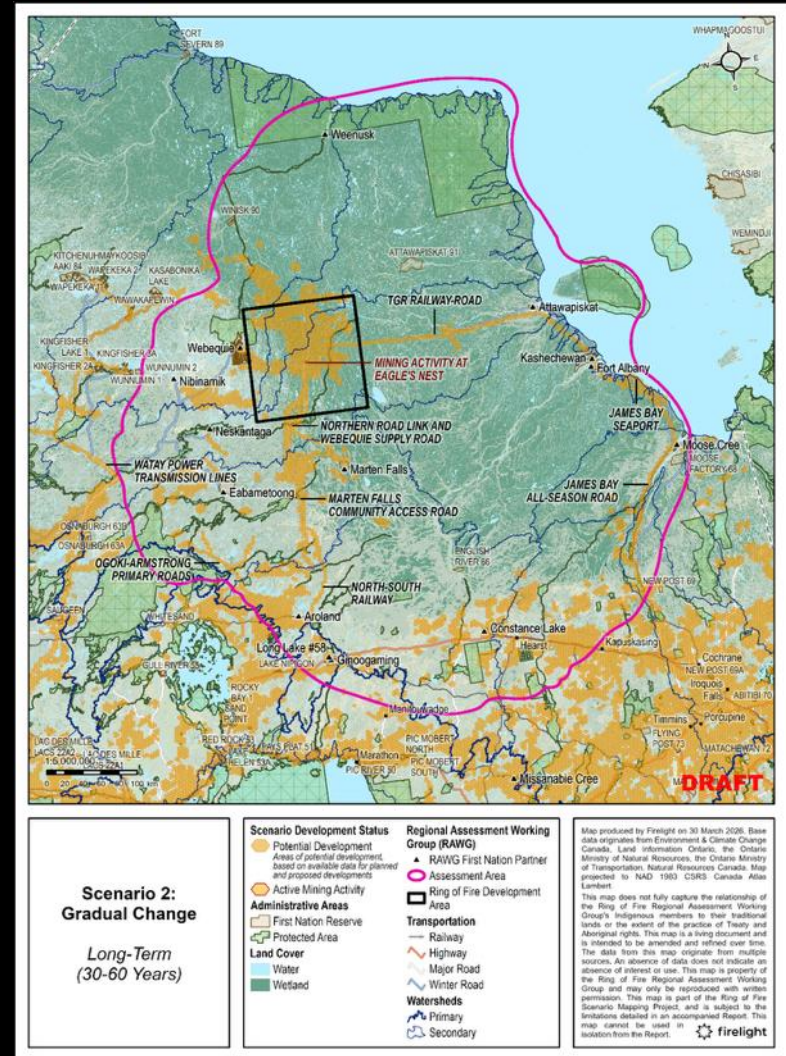
2050



Looking ahead 60 years

What longer term cumulative effects on land/water rights are missing?

- full footprints and disturbance effects
- overlay of FN land use and especially valued areas
- dewatering
- downstream contamination [RedDot/Cizek report, p.13]
- future climate effects, including peatland losses, fire, etc.
- community effects (positive and adverse, hard to map but crucial)
- different pace and scale (zero to 33 mines) implications



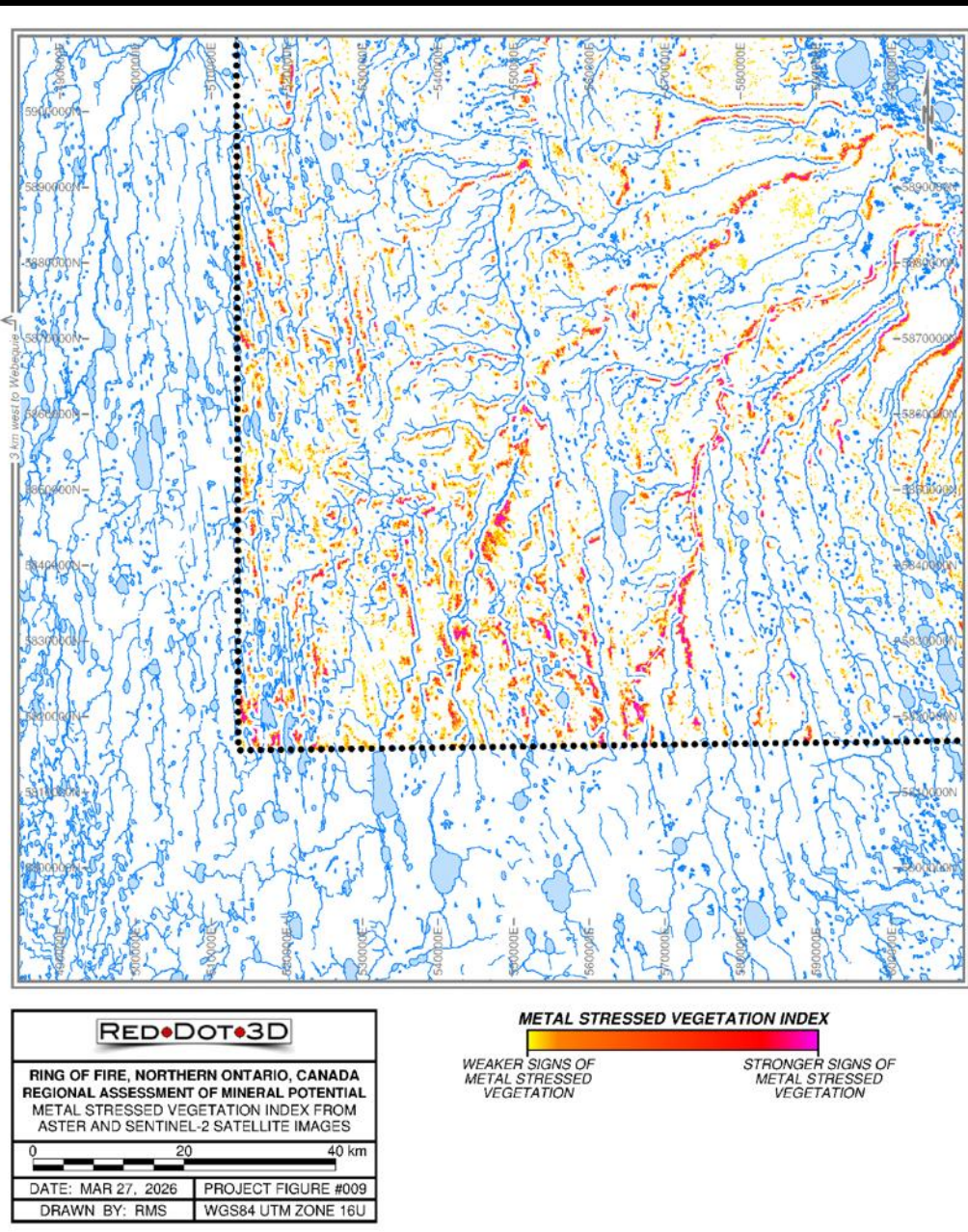
Firelight 30-60 years initial map

Cumulative effects - risk of water contamination

Metal-stressed vegetation map

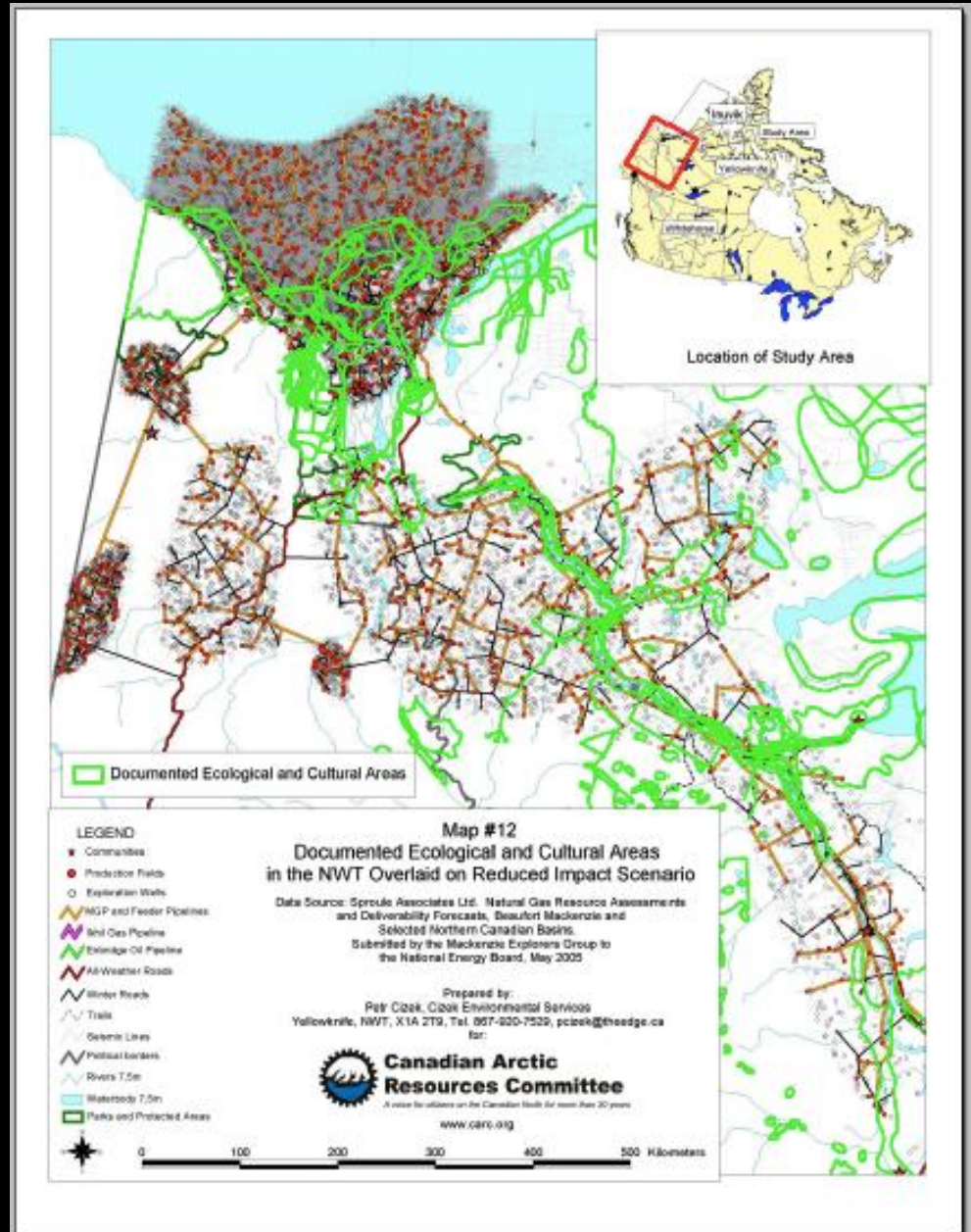
- pre-mining stresses along waterways downstream from prospective metal mining area

(Cizek/RedDot report p.13, p.13)



Industrial development and land use overlay

- areas of expected conflicts between ecological and cultural interests and gas development under the full built-out scenario



Regional Assessment priorities for considering future scenarios

- **Mamaaw'minoosewin**
(community wellbeing)
- **Inakaanesiwin'minoosewin**
(cultural and spiritual wellbeing)
- **Pimaatsiwin'minoosewin**
(social and economic equity)
- **Miisiwe'minoo'aakiiwin**
(healthy environment relationships)



RAWG



Harry Papah